

Born	9/11/2009
Breeder	Not yet available
Evaluation	Holstein
International ID	HOLUSAM000068977120

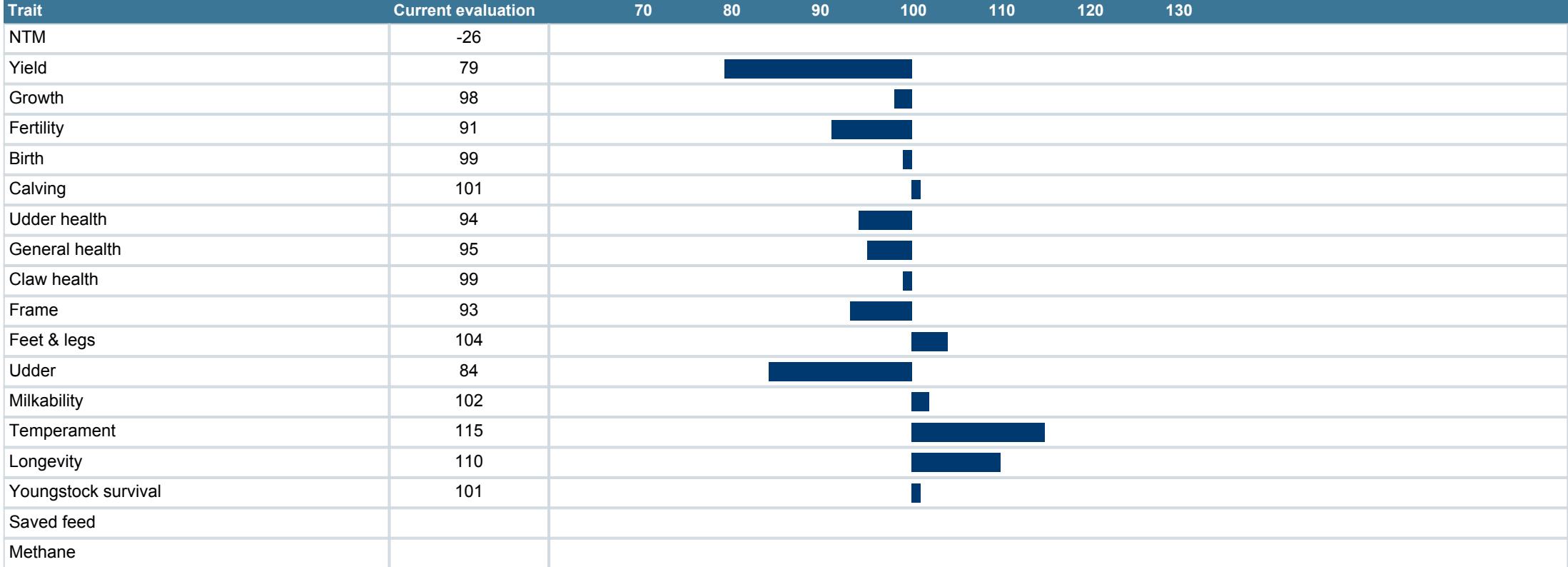
Herdbook number	
FIN	95975
SWE	91240
DNK	254129

Evaluation published **02.06.2026**

Trait	# Daughters	# Herds
Yield	52	31
Udder health	30	30
Conformation	30	19

Breed proportions	[Bar chart showing proportions]	
	Breed	
%	HOL 99	BW 1

Sire	Planet HOLUSAM00006059700 3	PGS	R Taboo HOLUSAM00001712120 3
		PGD	Plushanski Amel Patty HOLUSAF00013016103 9
Dam	Ladys Manor Ruby D Shawn HOLUSAF00006236074 1	MGS	P Shottle HOLGBRM0000005981 72
		MGD	Ladys Manor Ruby D HOLUSAF00006046269 1
		MGDS	RMandelDebut





faba