

Born	9/27/1982
Breeder	Not yet available
Evaluation	Nordic red breeds
International ID	RDCSWEM000000083548

Herdbook number	
FIN	38872
SWE	83548

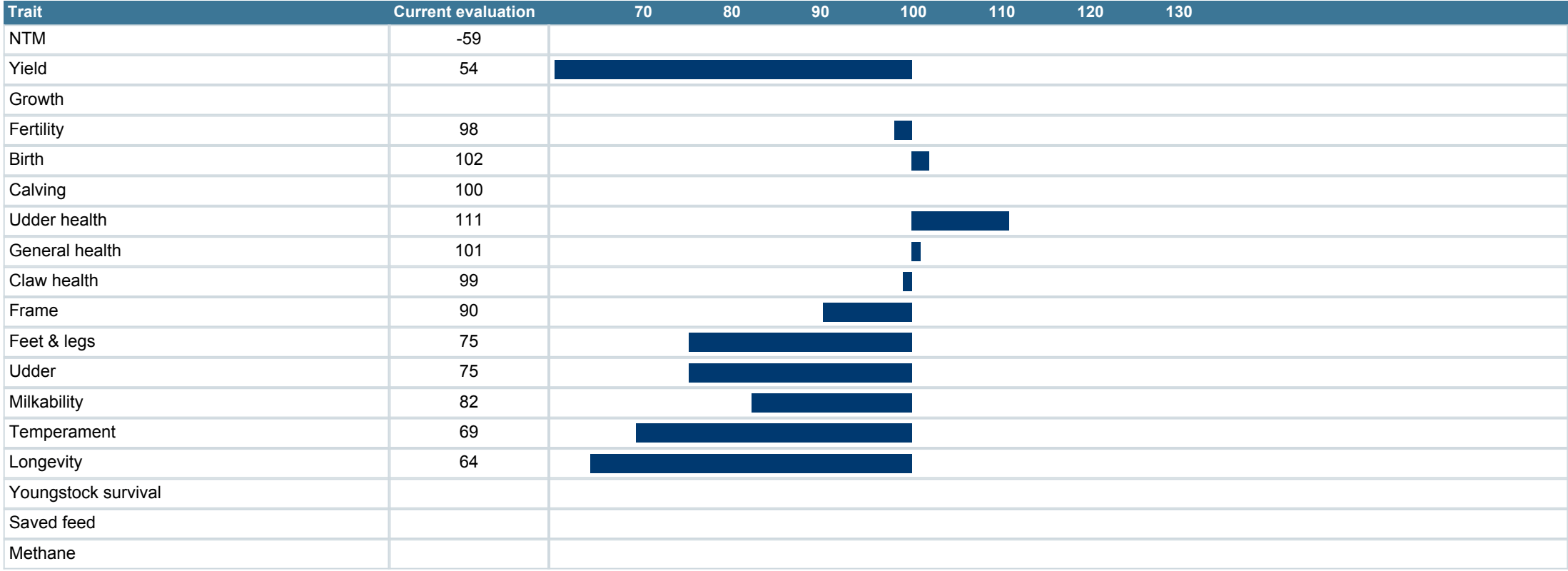
Evaluation published **02.06.2026**

Trait	# Daughters	# Herds
Yield	233	206
Udder health	13432	4623
Conformation	31	21

Breed	FAY	SRB	NRF
%	54	44	2

Sire	Salintupa RDCFINM00000003301 8	PGS	N.Olpi RDCFINM000000030480
		PGD	RDCFINF000001442909
Dam	RDCSWEF00185504107 1	MGS	BO NERLIEN RDCNORM0000000011 07
		MGD	RDCSWEF0017580102 66
		MGD S	WÄSBY



**faba**